

COVID Radiology Triage for Outpatients

Updated 1/5/2022

In the last 2 weeks have you tested positive or knowingly been exposed¹ to someone who tested positive for COVID-19?

OR

Do you have any of the following symptoms?

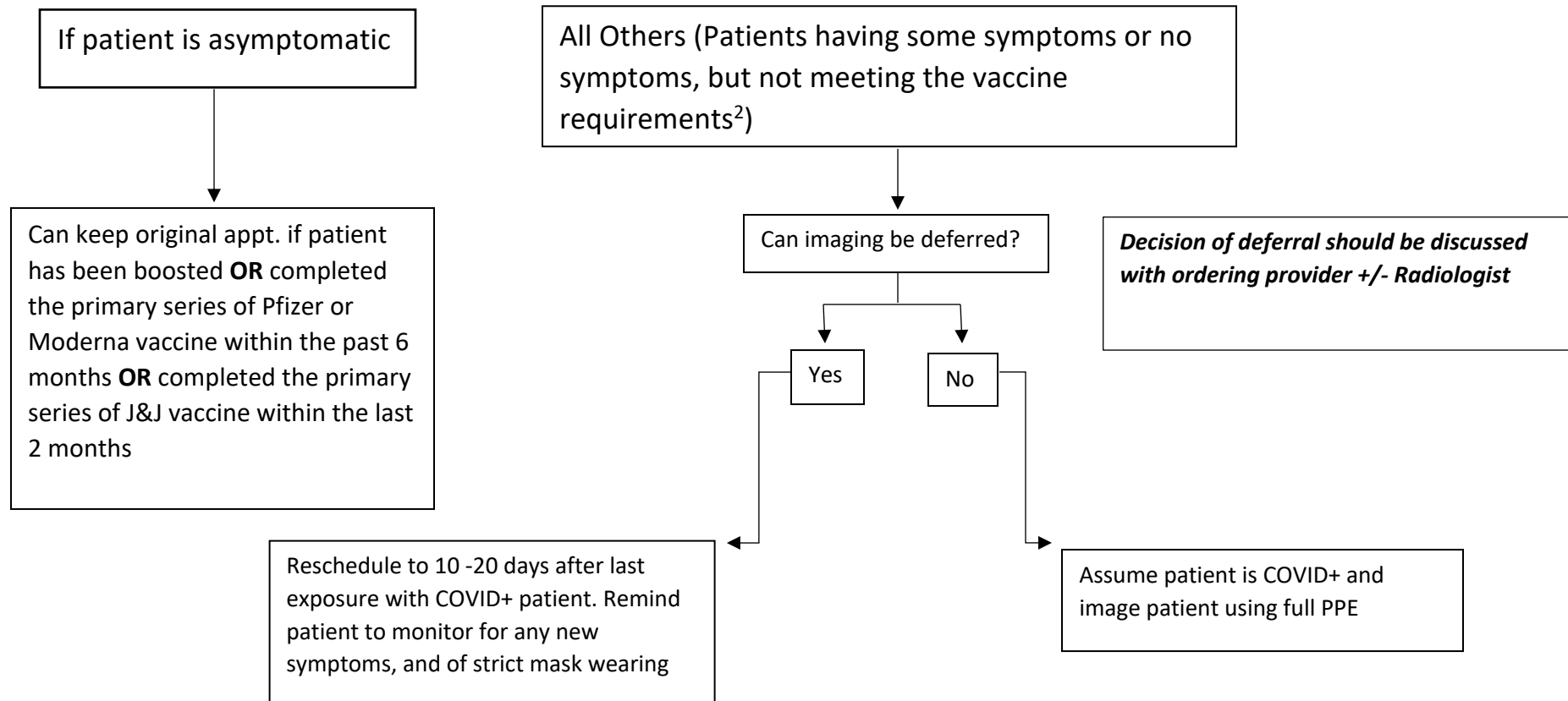
- Fever >100 F or chills
 - New cough
- New shortness of breath/difficulty breathing
 - New sore throat
 - New loss of taste or smell
 - New muscle pain
- New congestion or runny nose
 - New vomiting or diarrhea

¹ The CDC defines exposure for patients as close, prolonged contact with a known COVID+ patient for >15 minutes and within 6 feet, or any amount of time living in the same home as someone who is known to be COVID+

² Vaccine requirements are described as Boosted **OR** completed the primary series of Pfizer or Moderna vaccine within the past 6 months **OR** completed the primary series of J&J vaccine within the last 2 months

³ Immunocompromised-Receiving chemo/immune therapy for cancer, HIV with CD4 < 200, and/or high dose steroids for > 14 days

Approach for possible exposure but NOT confirmed COVID positive



¹ The CDC defines exposure for patients as close, prolonged contact with a known COVID+ patient for >15 minutes and within 6 feet, or any amount of time living in the same home as someone who is known to be COVID+

² Vaccine requirements are described as Boosted **OR** completed the primary series of Pfizer or Moderna vaccine within the past 6 months **OR** completed the primary series of J&J vaccine within the last 2 months

³ Immunocompromised-Receiving chemo/immune therapy for cancer, HIV with CD4 < 200, and/or high dose steroids for > 14 days

Approach for known COVID+ Patients

Some COVID+ outpatients can NOT wait to clear quarantine and will need their imaging while infected. If so, wear proper PPE and follow site COVID imaging workflow (minimize wait time, etc.) and perform exam.

Patients are safe to image WITHOUT COVID precautions at any site if **ALL** of the following are met:

10 days after the onset of symptoms (symptomatic positive) or day of positive test (asymptomatic positive). 20 days from the onset of symptoms for severe (needed hospital admission) cases or for immunocompromised³

AND

24 hours fever free
(without fever reducing medications)

AND

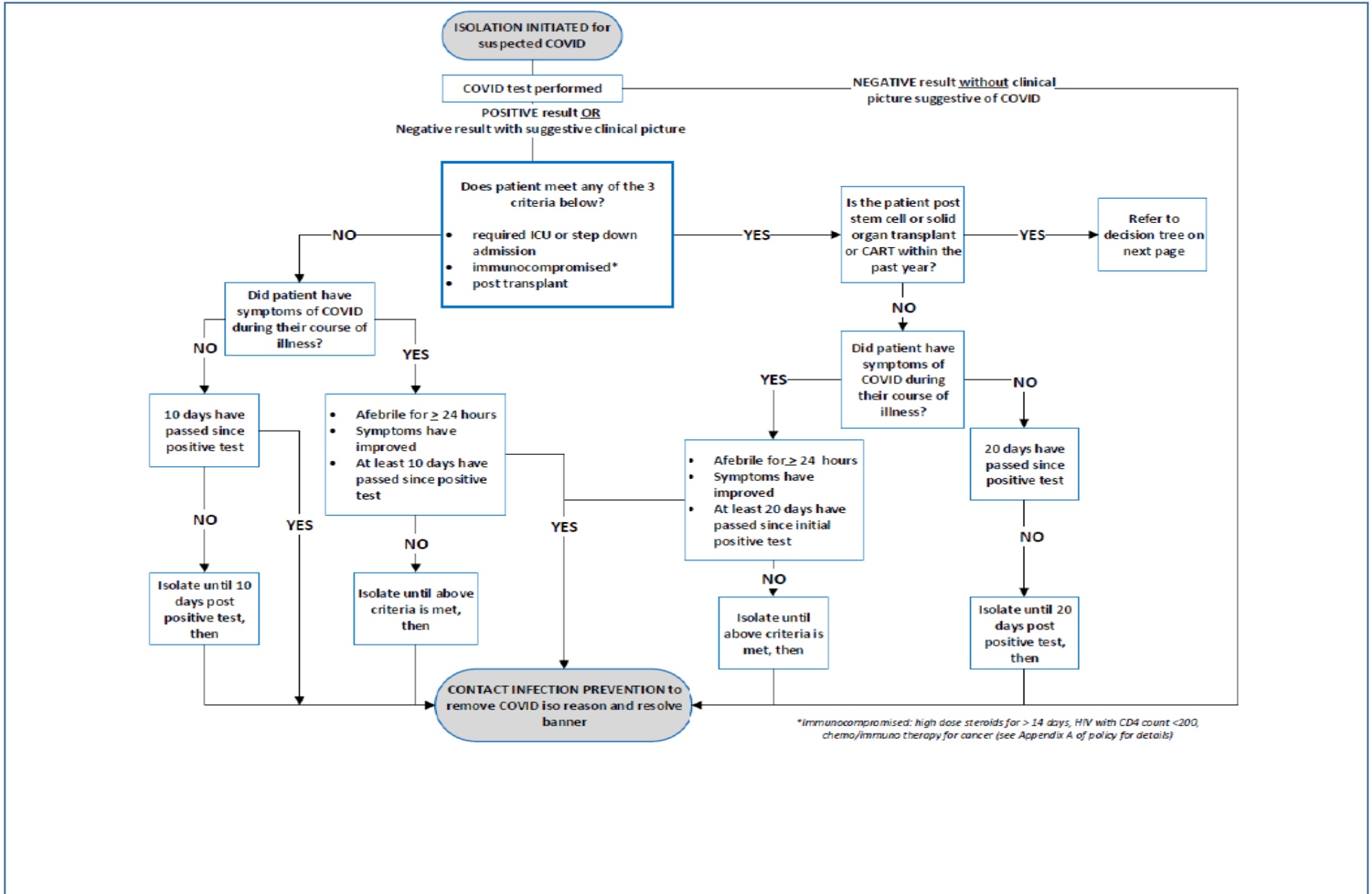
Other symptoms improving

¹ The CDC defines exposure for patients as close, prolonged contact with a known COVID+ patient for >15 minutes and within 6 feet, or any amount of time living in the same home as someone who is known to be COVID+

² Vaccine requirements are described as Boosted **OR** completed the primary series of Pfizer or Moderna vaccine within the past 6 months **OR** completed the primary series of J&J vaccine within the last 2 months

³ Immunocompromised-Receiving chemo/immune therapy for cancer, HIV with CD4 < 200, and/or high dose steroids for > 14 days

Determining COVID precautions for COVID-19 positive outpatients, including those with immunocompromised conditions, history of cancer, or recovery from severe COVID infection



Determining COVID precautions and need for repeat COVID test for COVID-19 positive outpatients, including those with immunocompromised conditions, history of cancer, or recovery from severe COVID infection

Medical Condition	Require 20 day clearance without need for COVID retest	Requires COVID re-testing to clear patient as no longer contagious after 20d
High Dose Steroids	If on 20mg (or more) Prednisone (or equivalent) for >14 days	NO
HIV	If CD4 T lymphocyte count <200	NO
Cancer treatments	If on active treatment with Cytotoxic Chemotherapy or Immunotherapy	NO
CAR-T	If >1 year post CAR-T cell therapy	Yes if <1 year post CAR-T cell therapy
Post allogenic hematopoietic stem cell transplant	Must meet all of the following: <ul style="list-style-type: none"> • >1 year post transplant • Off immunosuppression >3 months • CD4 T lymphocyte count >200 • Absence of GVHD 	Yes- If any of these present: <ul style="list-style-type: none"> • <1 year post transplant • Receiving immunosuppression or within 3 months of discontinuation • GVHD • CD4 count <200
Post autologous hematopoietic stem cell transplant	Yes if >1 year post transplant	Yes if <1 year post transplant
Post solid organ transplant	Yes if >1 year post transplant	Yes if <1 year post transplant

