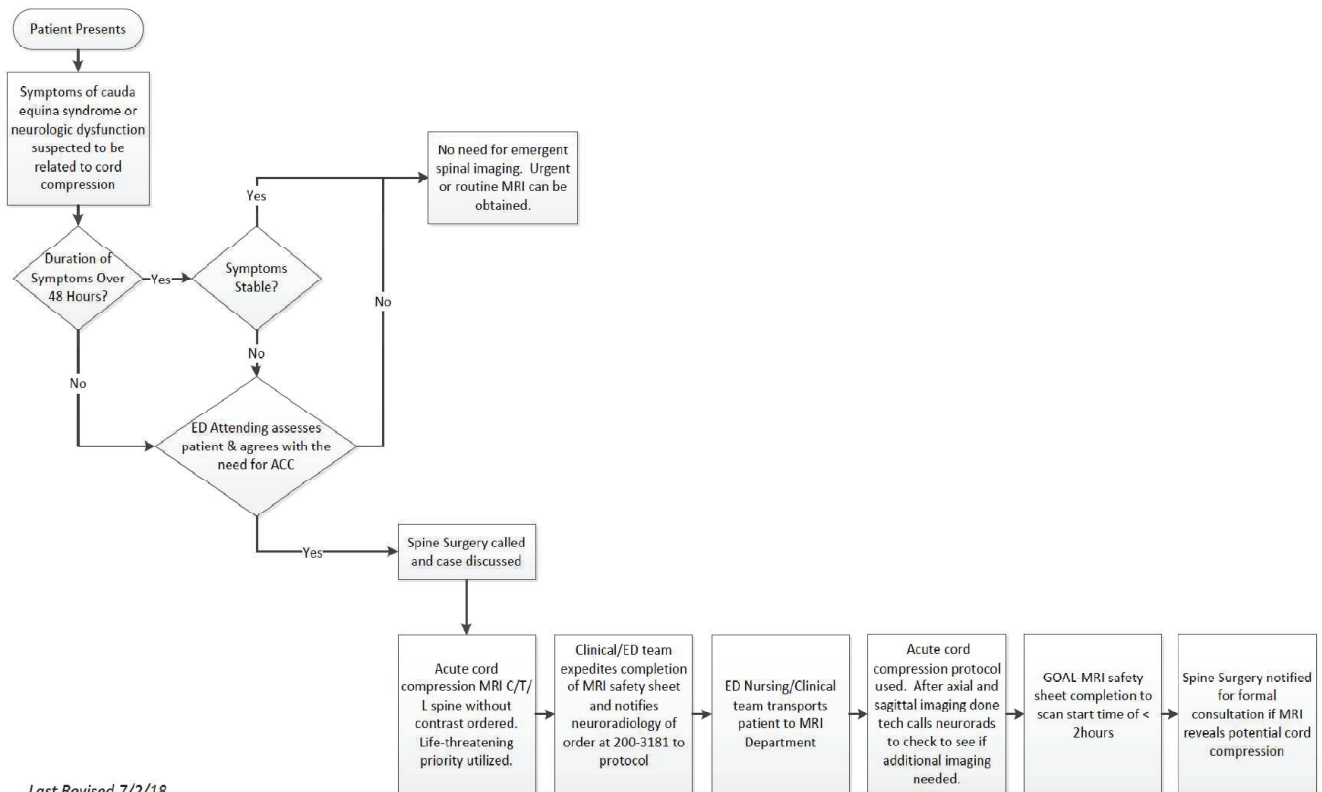


| | | | |
|--|--|-------------------------------------|-------------------|
| YALE-NEW HAVEN HOSPITAL DEPT. OF DIAGNOSTIC RADIOLOGY POLICY AND PROCEDURE MANUAL MRI Safety Manual | Reviewed Date 2018 | Last Revision 2018 | Policy No. |
| | SUBJECT: Acute Cord Compression | | |

Acute Cord Compression MRI Protocol

The acute cord compression protocol has been designed to allow for rapid imaging of high risk patients presenting with new or worsening symptoms, of under 48 hours duration, suspected to have acute cord compression or cauda equina syndrome. The protocol was developed by Radiology in conjunction with MRI Operations, Spine Surgery and Emergency Medicine, to rapidly diagnose or exclude cord compression. Other neurologic conditions that can potentially mimic cord compression symptoms will not be well assessed by this rapid protocol, and the patient may need to come back for repeat imaging in those cases.

Acute Cord Compression (ACC) Protocol



Last Revised 7/2/18