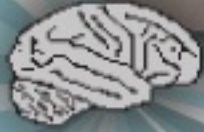


# Yale Child Study Center



# EFC LAB



Yale Child Study Center  
 Developmental Electrophysiology Lab  
 NIH B G-7  
 230 S. Frontage Rd.  
 New Haven, CT 06520  
 203.785.5786



brain maze

★ start

★ end

PERFECT

brain cell neuron think  
 cerebrum gyrus cortex  
 head lobe skull eeg eye

B	H	N	W	E	T	U	P	N	X	
R	A	D	L	K	N	T	Y	T	U	V
I	N	M	C	D	I	O	U	Y	O	S
S	O	Y	A	S	A	N	J	W	M	
W	H	F	I	N	K	O	E	J	U	M
T	H	I	N	K	E	B	R	U	M	
X	S	C	E	R	E	B	R	U	M	
E	P	C	M	D	K	Q	L	E	R	
P	Y	H	T	O	A	W	O	B	K	S
Q	J	E	T	E	M	O	B	K	S	
O	I	H	I	H	L	L	U	K	S	

You've got questions. We've got answers.

### ● What do I get for visiting the lab?

You will be Paid **\$XX** for participating. We can send you a picture of your very own brain waves and a picture of you with the hat on! What can be better than that?!

### ● I get to wear a silly hat? What's that like?

You get to wear a special hat that will read your brain waves! The hat is so safe that we use the SAME hat on newborn babies! The hat only takes about 5 or 10 minutes to set up. You'll even get to watch a movie or play a hand-held video game while we put the hat on.

### ● The hat is damp? Will I get really wet?

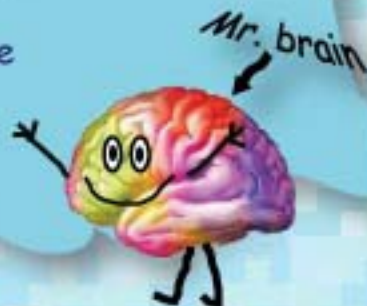
The sponges on the hat have to be wet to work so your hair will get damp. We have lots of towels and a hair dryer to help you dry your hair if you need it.

### ● What is a visit to the lab like?

We're glad you asked! When you visit the lab to be in a study you will play some computer games while wearing a silly hat made of tiny sponges. You'll get play 2 or 3 fun computer games and even see your brain activity!

### ● Wow! Sounds like fun, how do I get to be in a study?

That's easy! You can call the lab at 785-5786 and ask for Michael Crowley. You can also email them at michael.crowley@yale.edu. You may also receive a phone call from someone at the lab asking you to be in a study...just say YES!



Did You Know?



- A human brain weighs 3 pounds.
- An elephant brain weighs over 13 pounds!
- A human brain has more than 100 billion brain cells!
- Brain cells carry messages at a speed of 240 mph!
- The first EEG was recorded in 1920.
- If you lined up all the brain cells in your body it would stretch from New Haven, Connecticut to Raleigh, North Carolina!
- The Stegasaurus, which was 30 ft. long had a brain the size of a walnut!
- We have about 10 thousand taste buds in our mouth!