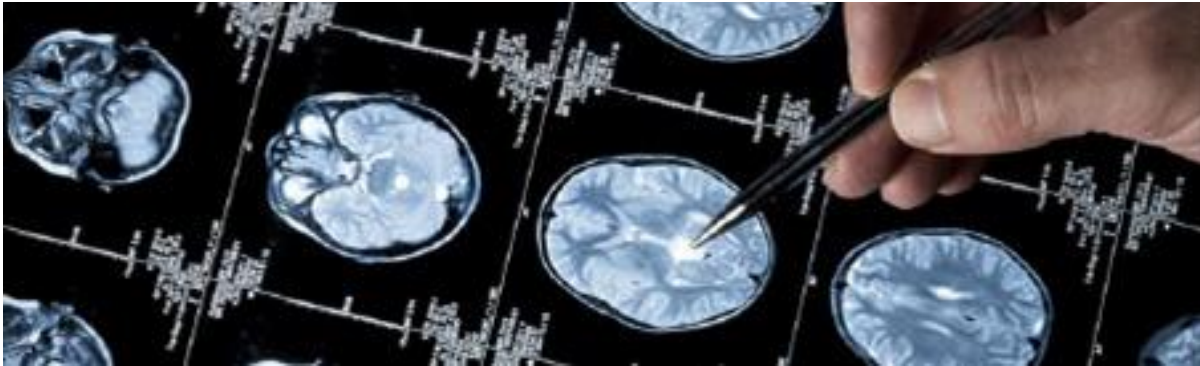


Alzheimer's Disease Research Center (ADRC)



We are pleased to share information on new additions to the ORE core of the ADRC.

Welcome

We would like to welcome new additions to the Outreach and Engagement Core of the ADRC.

New Associate Core Leader

Carmen I. Carrión, Psy.D. has joined the ORE as an Associate Core Leader, joining Isis Burgos-Chapman, MD. Dr. Carrión is an Assistant Professor and a bilingual (Spanish) neuropsychologist in the department of Neurology. Dr. Carrión has more than ten years of experience serving diverse communities throughout the U.S. with a research focus on health disparities in Alzheimer's disease and related dementias. In collaboration with Yale's Clinical and Outreach Cores, Dr. Carrión will work with the greater New Haven community to discuss how the findings from this research could help us understand health disparities, and over time, influence policies that lead to improvements in our community. Dr. Carrión, will lead the Yale site of the Neighborhoods Study, a federally funded project led by Amy Kind, MD, Ph.D. and Barbara Bendlin, Ph.D. from the University of Wisconsin (Grant: 5R01MD10243). The Neighborhoods Study is a multi-site collaboration including 22 ADRC's that seeks to understand why differences in cognitive and brain health outcomes occur across different communities. From prior studies, we have learned that these differences are influenced both by factors within the individual (e.g., family history of dementia) and society (e.g., historical injustice). Our study will focus on societal level factors to determine whether larger and earlier exposures to neighborhood disadvantage lead to greater difficulties in thinking (cognition), a faster rate of cognitive decline, and greater structural brain changes. For more information about this study, you can reach out to site investigator Carmen I. Carrión, Psy.D. at carmen.carrion@yale.edu

Select Publications:

Hunt, J., Buckingham, W., Kim, A. J., Oh, J., Vogt, N. M., Jonaitis, E. M., Hunt, T. K., Zuelsdorff, M., Powell, R., Norton, D., Rissman, R. A., Asthana, S., Okonkwo, O. C., Johnson, S. C., Kind, A., & Bendlin, B. B. (2020). Association of Neighborhood-Level Disadvantage with Cerebral and Hippocampal Volume. *JAMA neurology*, 77(4), 451–460. <https://doi.org/10.1001/jamaneurol.2019.4501>

Powell, W. R., Buckingham, W. R., Larson, J. L., Vilen, L., Yu, M., Salamat, M. S., Bendlin, B. B., Rissman, R. A., & Kind, A. (2020). Association of Neighborhood-Level Disadvantage with Alzheimer Disease Neuropathology. *JAMA network open*, 3(6), e207559. <https://doi.org/10.1001/jamanetworkopen.2020.7559>

ADRC Community Advisory Board (CAB)

The Outreach, Recruitment and Engagement Core has created a new Community Advisory Board. This newly formed ADRC Community Advisory Board (CAB) had its first meetings in early November 2021 and January 2022. CAB members bring a range of personal and professional experiences to the ADRC. The CAB will offer expertise and advice regarding recruitment strategies, community contacts, and relevance of materials. We look forward to their contributions to helping us better understand community concerns and needs as we continue to optimize education, outreach, and recruitment efforts.

The ADRC Community Advisory Board (CAB) members include:

John Blanton, MD

Elisamuel Colon

William Davis

Joanne Lewis, BA

Francisco Rosario-Ortiz, PhD

Maise Russell

Linda Smith

Thank for your interest in the Yale ADRC. For more information on our studies or to participate in studies please call or visit our website.

203-764-8100

<http://medicine.yale.edu/adrc/>



[Website](#) [Cores](#) [Education](#) [Faculty](#) [Publications](#) [Events & Seminars](#)



Yale School of Medicine
333 Cedar Street
New Haven CT 06510

CONTACT US

