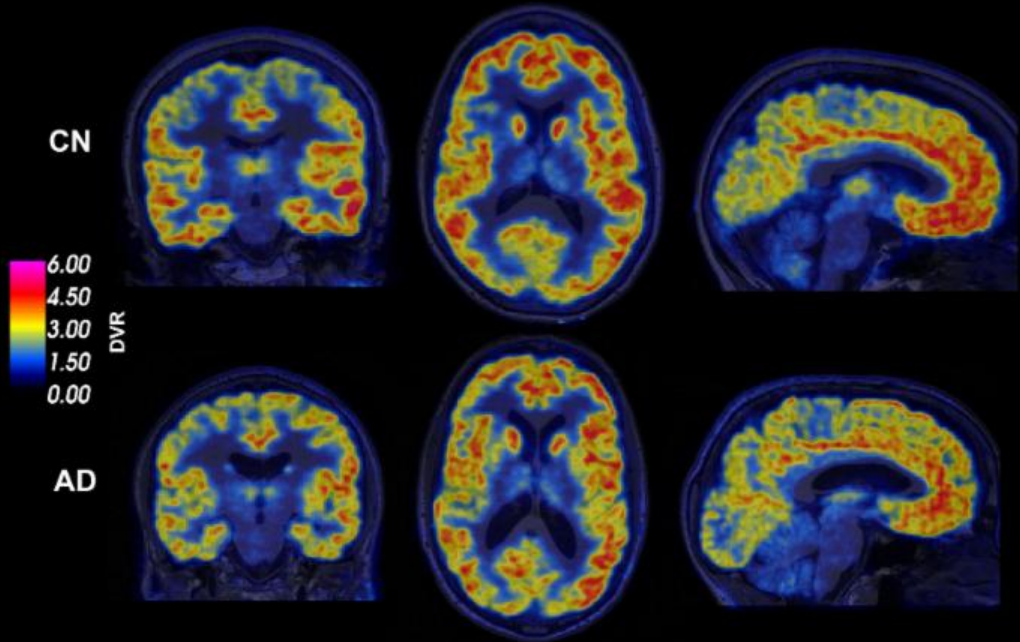


Alzheimer's Disease Research Center (ADRC)



Newsletter 14

We are pleased that Sheria G. Robinson-Lane, PHD, RN who is an Assistant Professor at the University of Michigan School of Nursing will lead a discussion on cultural considerations in end of life care for patients with dementia. Please see below for information and registration and details.

Dementia Care

alzheimer's  association®

**VIRTUAL
EDUCATION
PRESENTATION**



**Culturally
Responsive
Dementia Care
at the End of Life**

Perceptions of “a good death” and end of life care can differ significantly across cultural groups. Join us as we discuss strategies and guiding principles for providing culturally responsive care for diverse patients and families living with dementia.

JOIN US

**Wednesday,
November 18th**

10:30 AM - 12:00 PM



SPEAKER

**Sheria G.
Robinson-Lane,
PhD, RN**

Assistant Professor,
University of Michigan
School of Nursing

TO REGISTER, PLEASE VISIT:

alz.org/ct/events

or call our 24/7 Helpline: 800.272.3900

participate in studies please call or visit our website.

203-764-8100

<http://medicine.yale.edu/adrc/>



[Website](#) [Cores](#) [Education](#) [Faculty](#) [Publications](#) [Events & Seminars](#)



Yale School of Medicine
333 Cedar Street
New Haven CT 06510

CONTACT US

