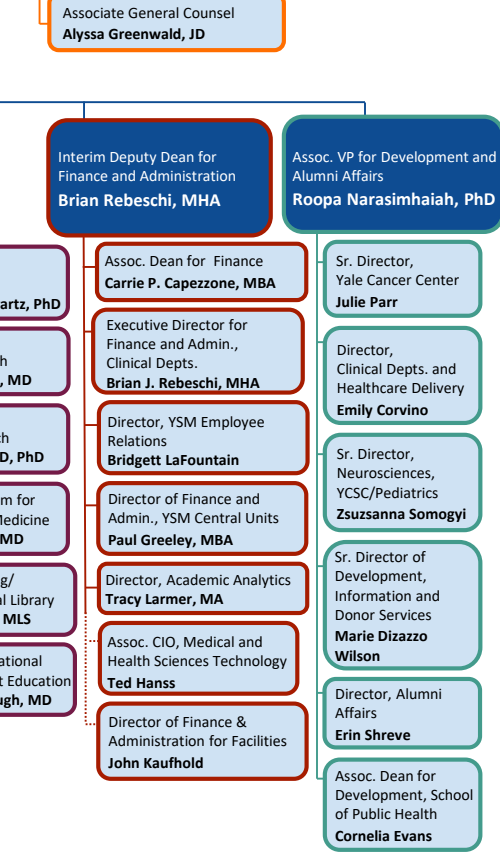
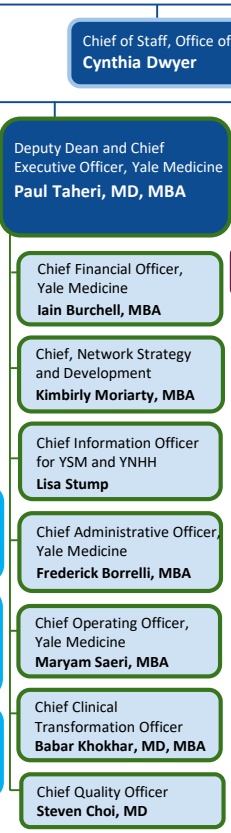
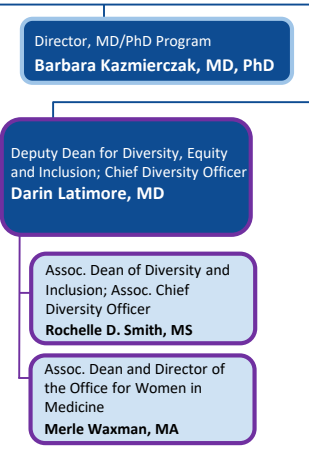
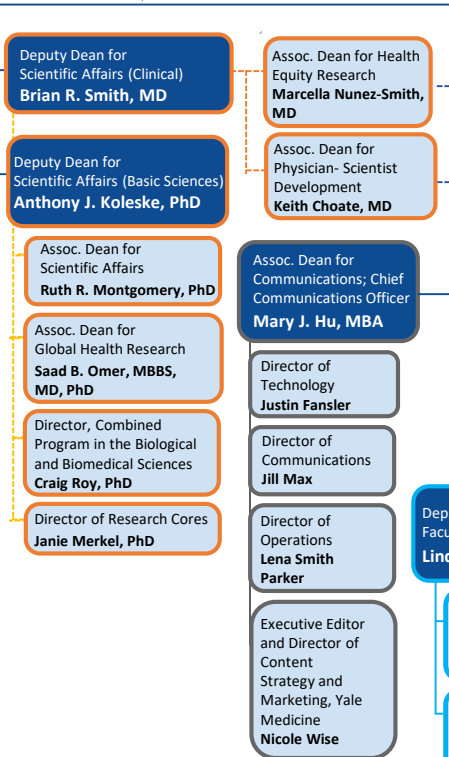


ORGANIZATIONAL CHART  
YSM Leadership

Dean, Yale School of Medicine  
**Nancy J. Brown, MD**

Deputy General Counsel for Health Affairs  
**Tina R. Tyson, JD**

Associate General Counsel  
**Alyssa Greenwald, JD**



KEY  
dotted line = dual report .....  
solid line = direct report ———