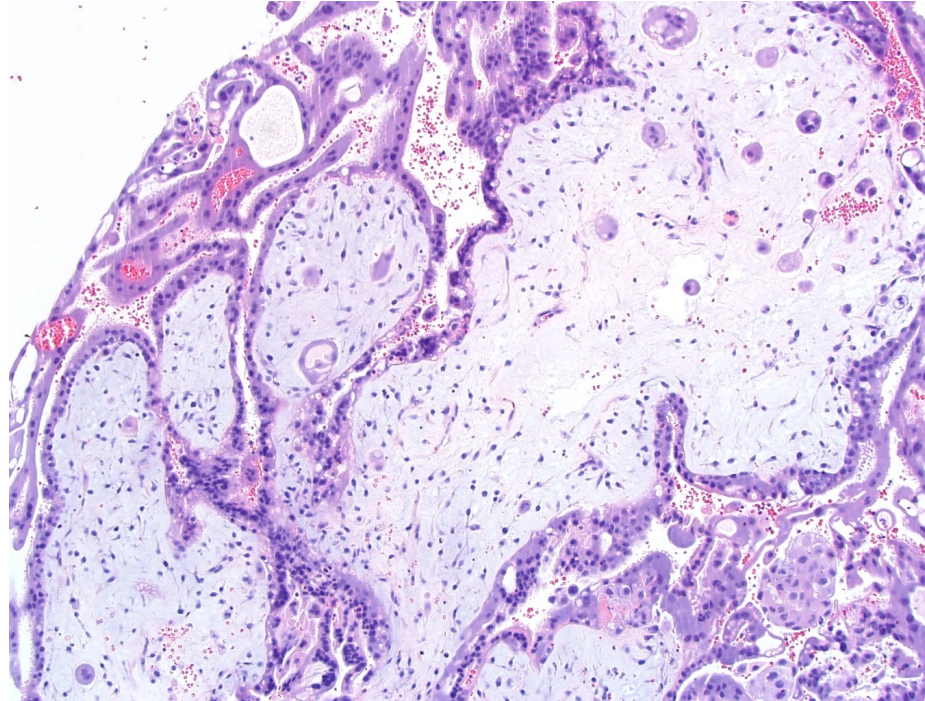
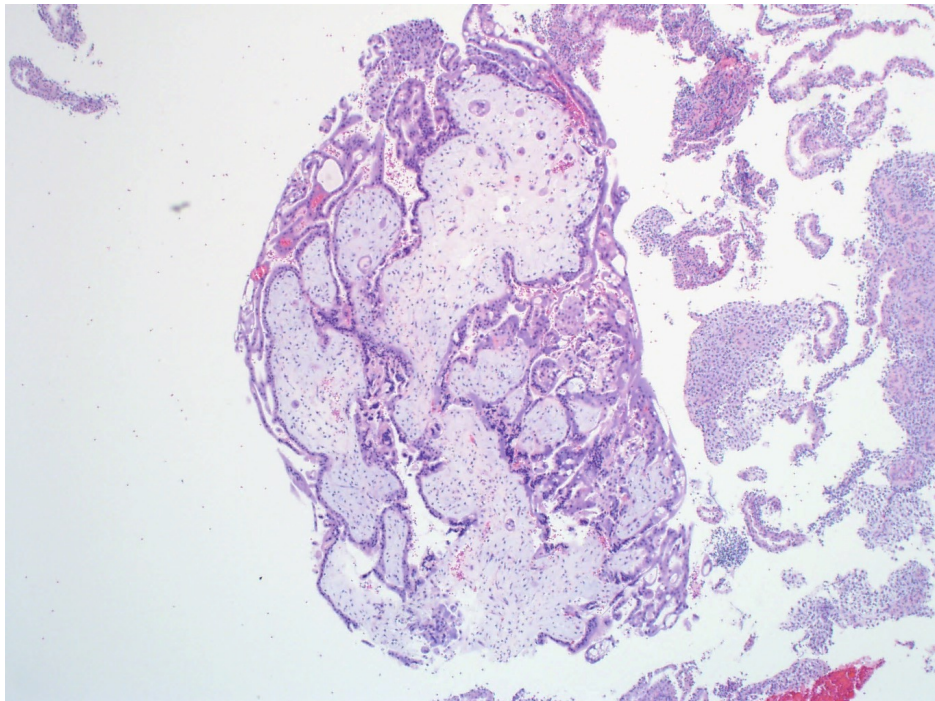
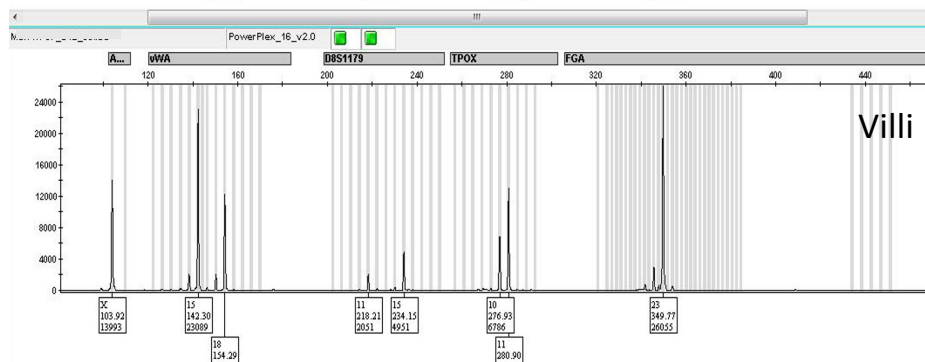
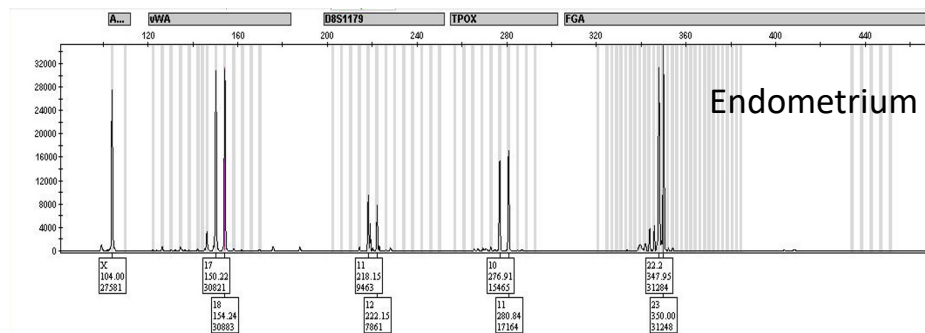
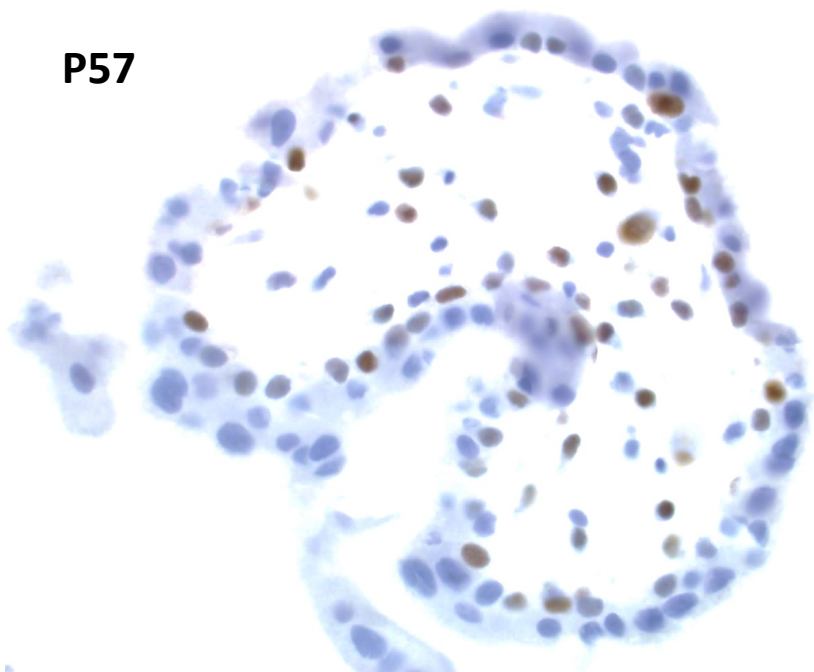




35-year-old presenting with missed abortion



P57

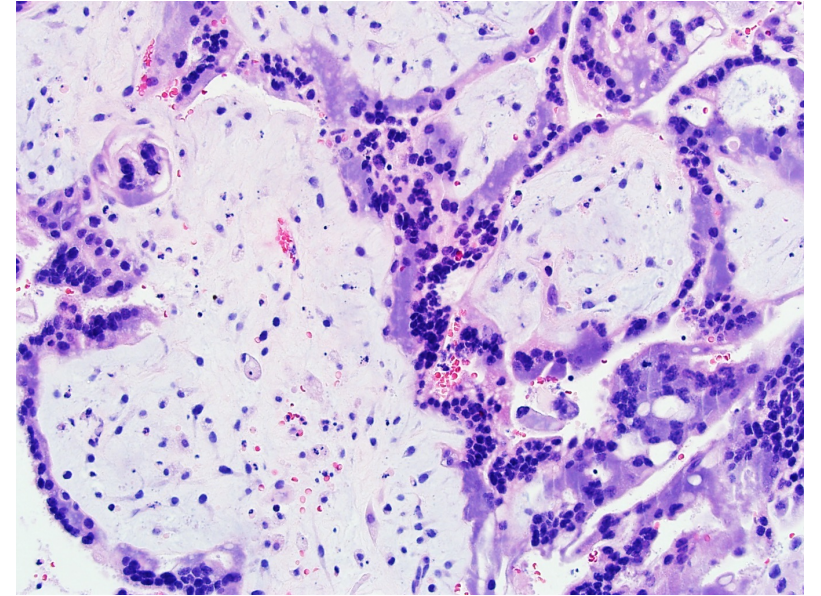
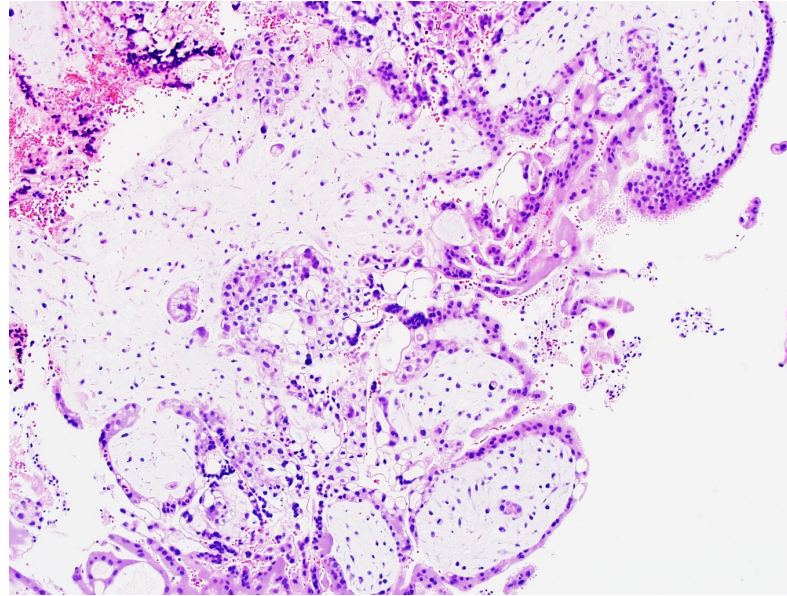
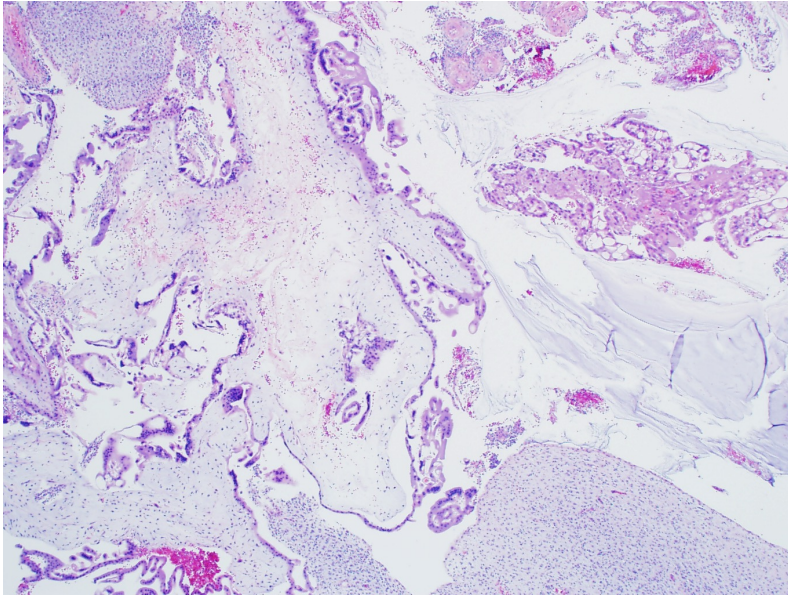


# Differential diagnoses

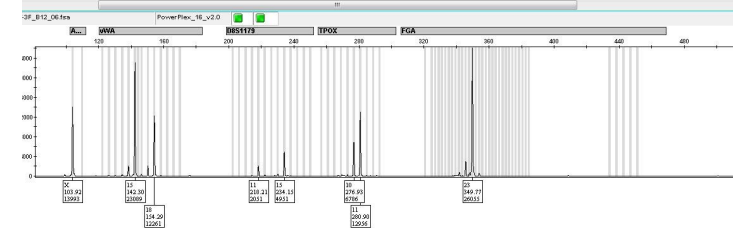
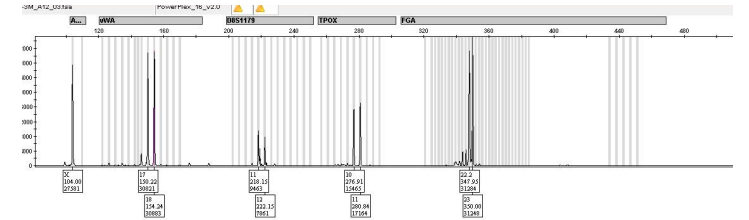
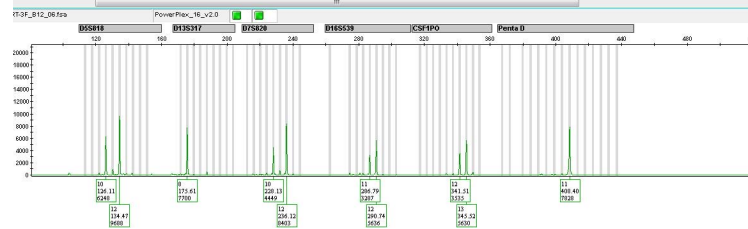
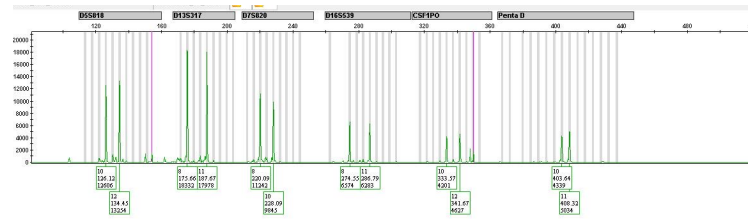
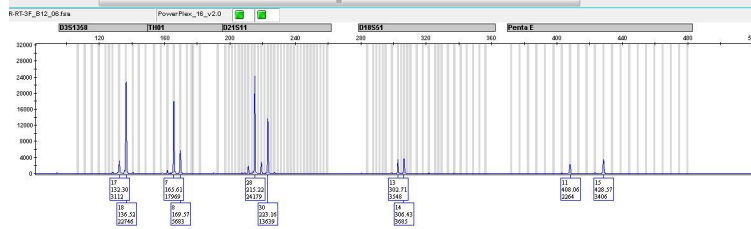
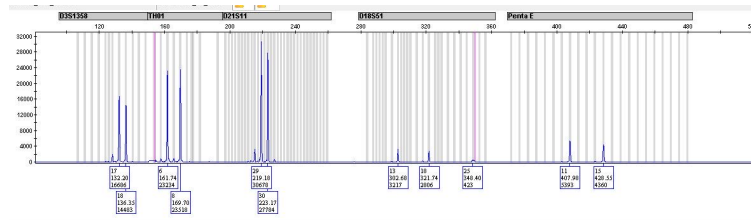
- A. Dispermic complete mole
- B. Monospermic complete mole
- C. Dispermic partial mole
- D. Monospermic partial mole



## Additional Histological Images of the Case



# Full Panel of STR Genotyping



## Discussion

This is a particularly tricky case with its histological features significantly overlapping with those of a very early complete mole (polypoid villous configuration, myxoid villous stroma and frequent apoptotic bodies) in addition to the presence trophoblastic pseudoinclusions. However, P57 is expressed in a normal fashion. Genotyping shows the presence of two homozygous copies of paternal allele plus one copy of maternal allele at all STR loci.

Final Diagnosis: Monospermic Partial Mole