

DESIGNER'S GUIDE

SECTION I

Organizational Issues

(Revised: March 3, 2008)



**Yale University
Facilities Planning & Construction**

TO ACCESS SECTION CLICK ON TITLE IN INDEX

DESIGNERS' GUIDE – TABLE OF CONTENTS

I. ORGANIZATIONAL ISSUES

MISSION STATEMENT

HISTORICAL PERSPECTIVE

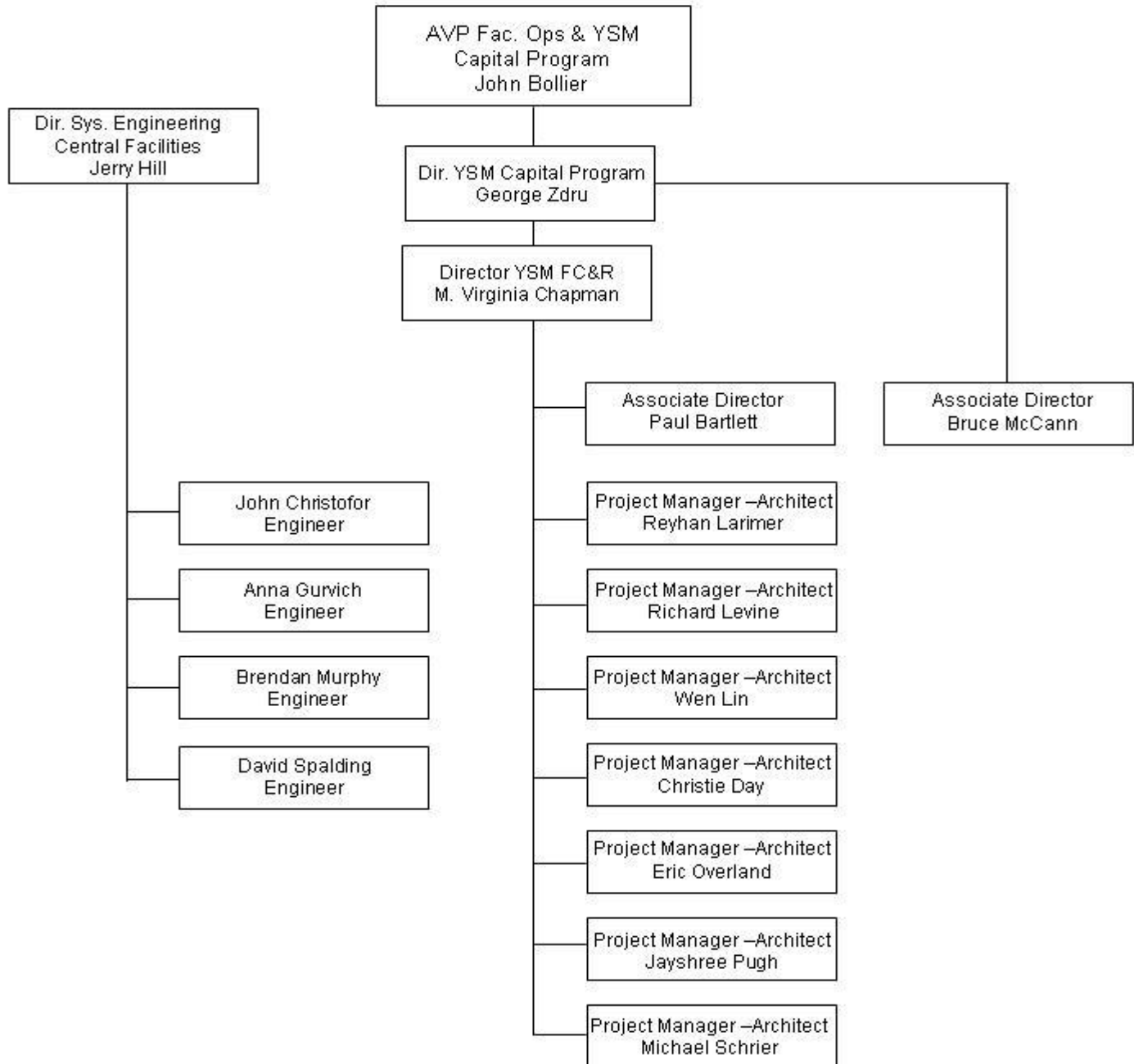
I. ORGANIZATIONAL ISSUES

MISSION STATEMENT

We, the Facilities Planning and Construction Department, are here for one basic reason: To serve as part of a team that provides the environment in which the mission of the University is achieved, in a cost effective and efficient manner. The value we add is in facilitating – managing – the process of creating some of those environments. We strive for full satisfaction of all stakeholders' needs and requirements at all times, on all activities. The portfolio of ongoing projects is the framework in which we manage our movement toward physical environments that reflect institutional ideals.

ORGANIZATIONAL CHART

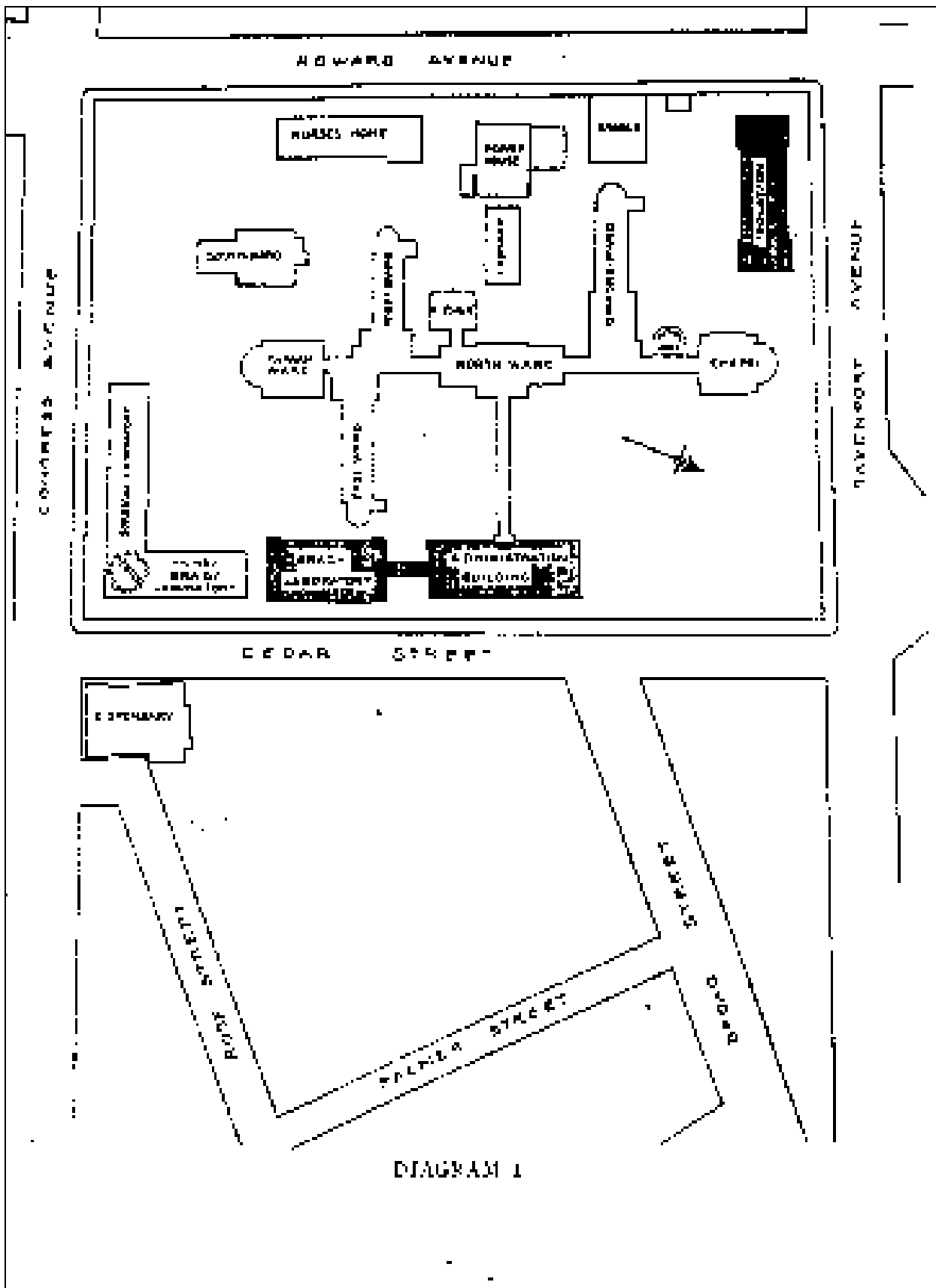
YSM Capital Program



HISTORICAL PERSPECTIVE

New designers, when they first visit Yale University always express amazement at the apparent cacophony of the physical form: wings seem to attach to other wings at odd angles; color patterns change with no apparent reason; even the floor numbering seems disorienting with an E-level and a G-level below level 1. The current physical plant embodies the dynamic nature of this institution.

The following diagrams show some of the steps by which we have grown. Each addition, each change, was driven by a particular need at a particular point in time. In each case, the designers made their contribution to knit together the disparate pieces of the complex into a whole. The results of the efforts of all of these various individuals are a complex with many idiosyncrasies, some of which are endearing, some of which are not. As each of us is called upon to make our contributions to this lasting institution, it is incumbent on us to be respectful of the contributions made in the past and to strive to make the whole more complete. This will sometimes mean making particular parts of a project more "background" than other parts of a project. By consciously choosing what areas of the complex will be more "foreground", we can begin to minimize the visual disharmony and begin to make the complex feel more whole.



[Top of the Document](#)



[Top of the Document](#)

1923

STERLING HALL OF MEDICINE, YALE UNIVERSITY, NEW HAVEN, CONNECTICUT.



[Top of the Document](#)

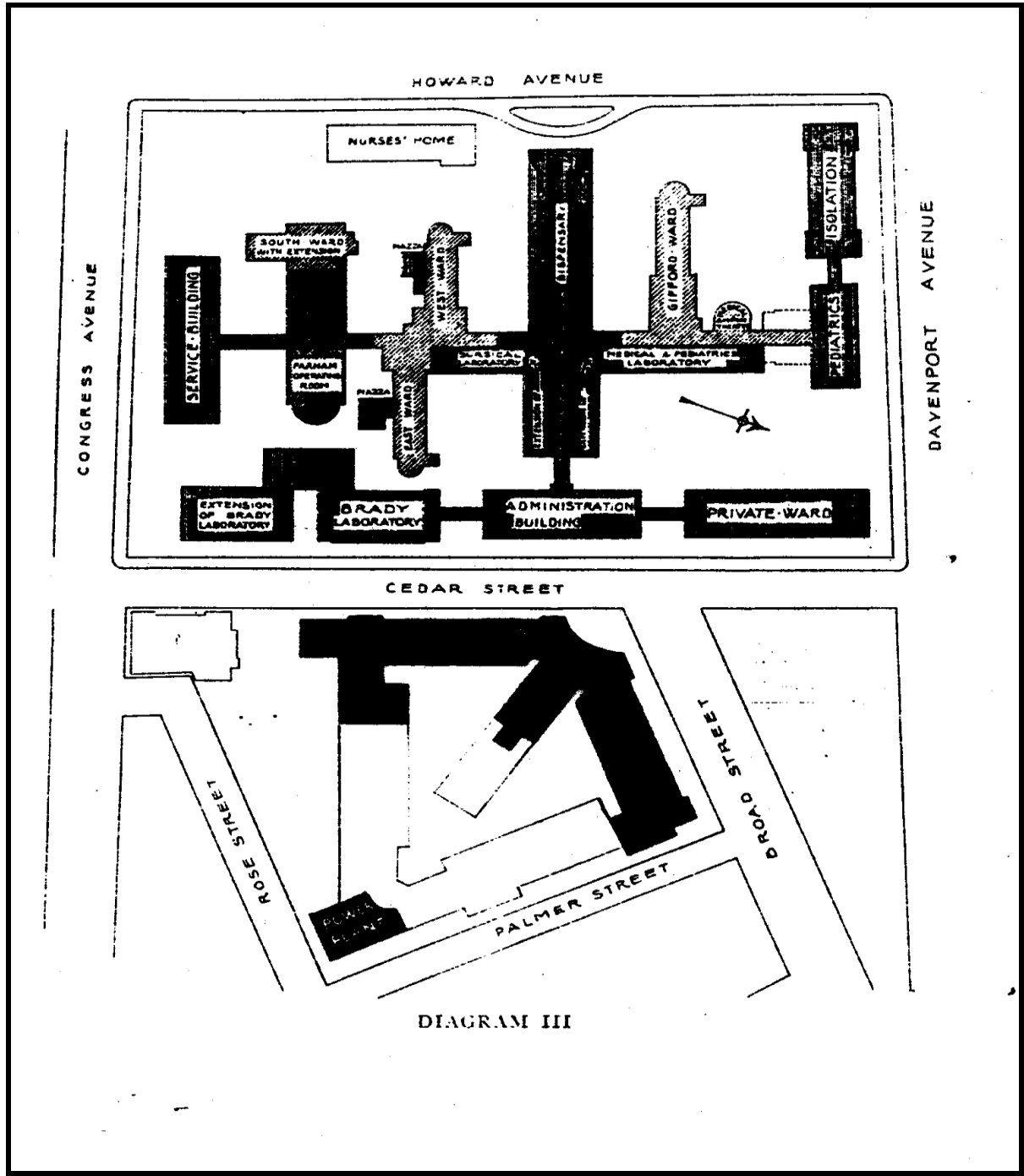
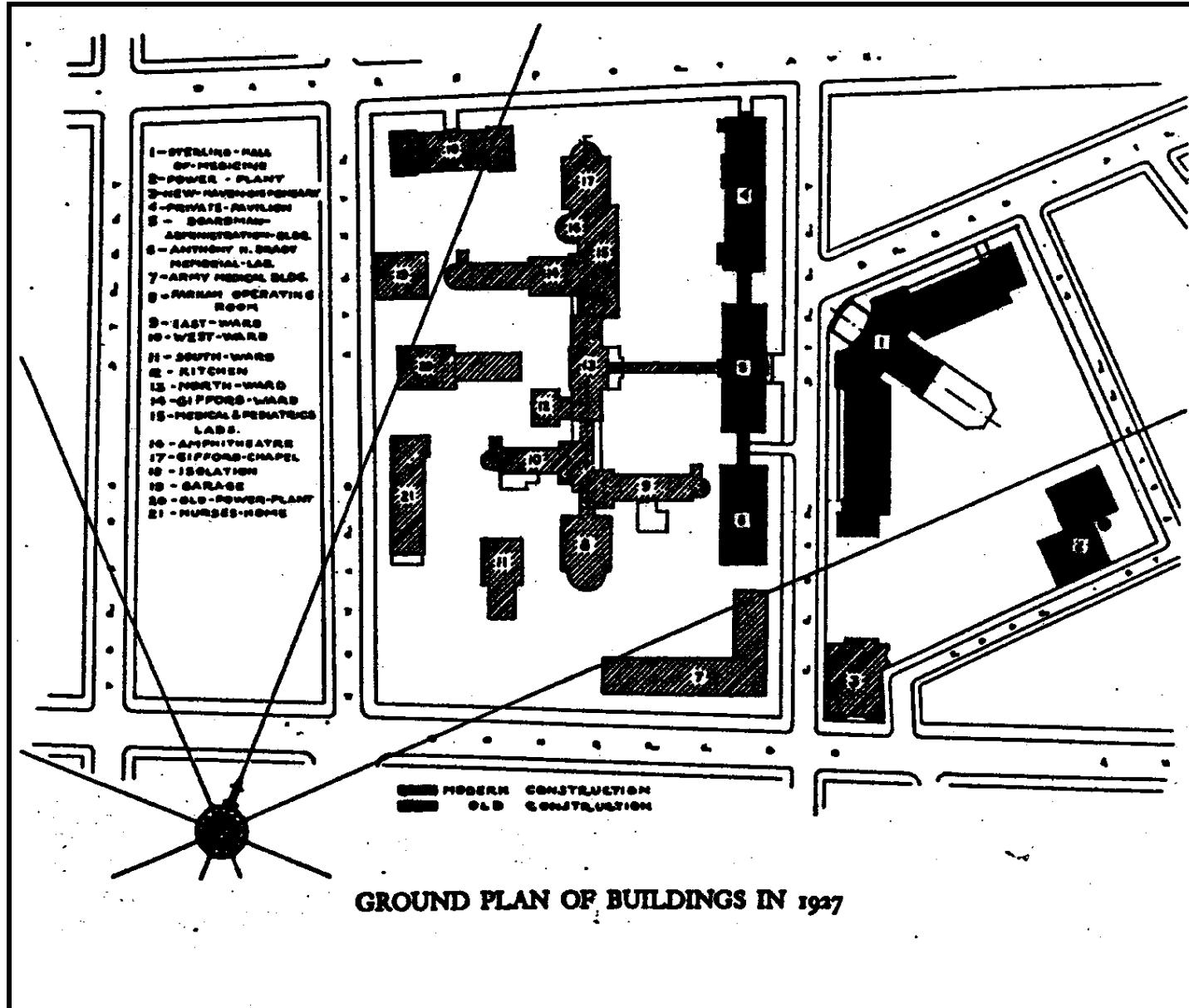
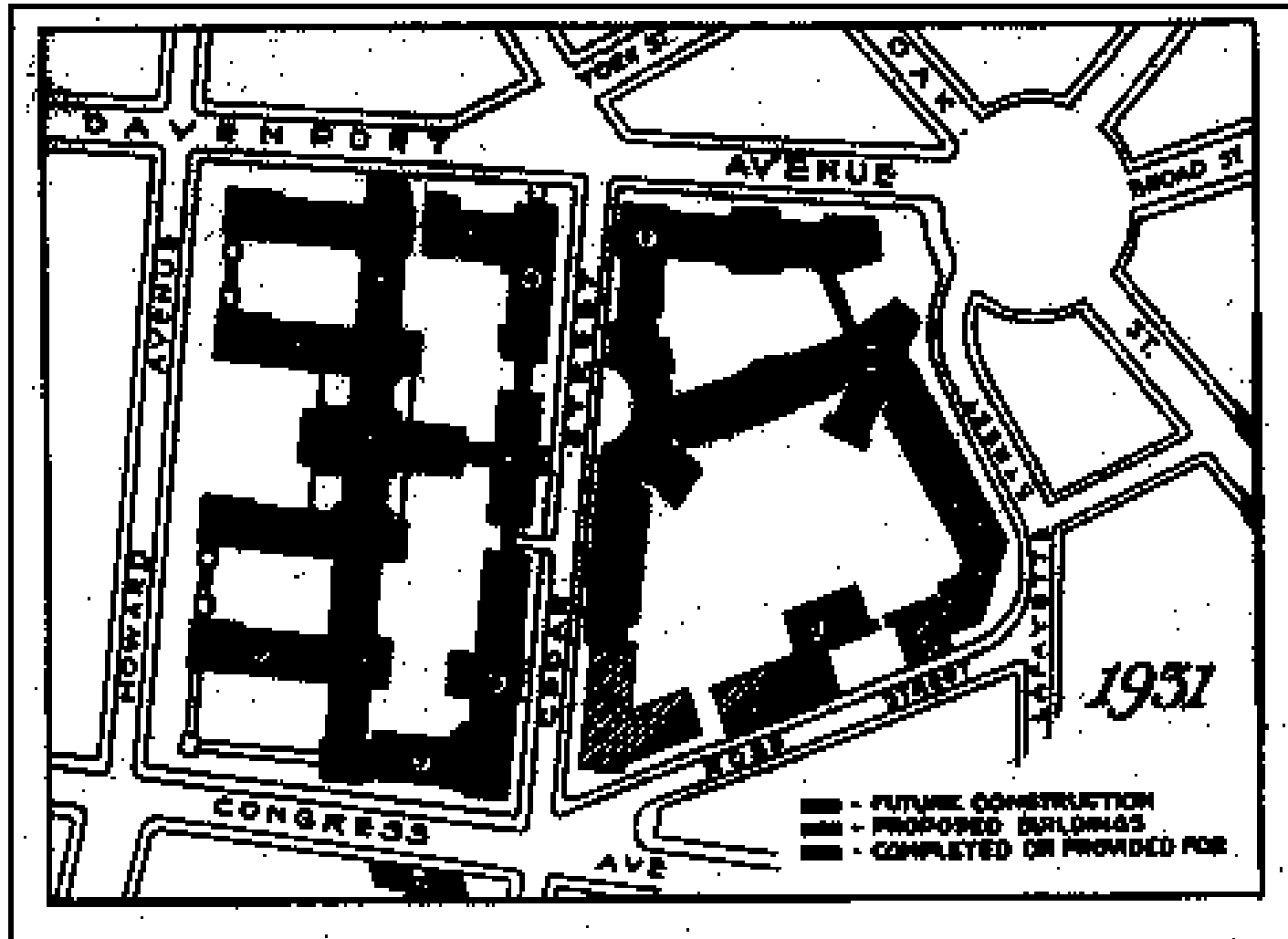
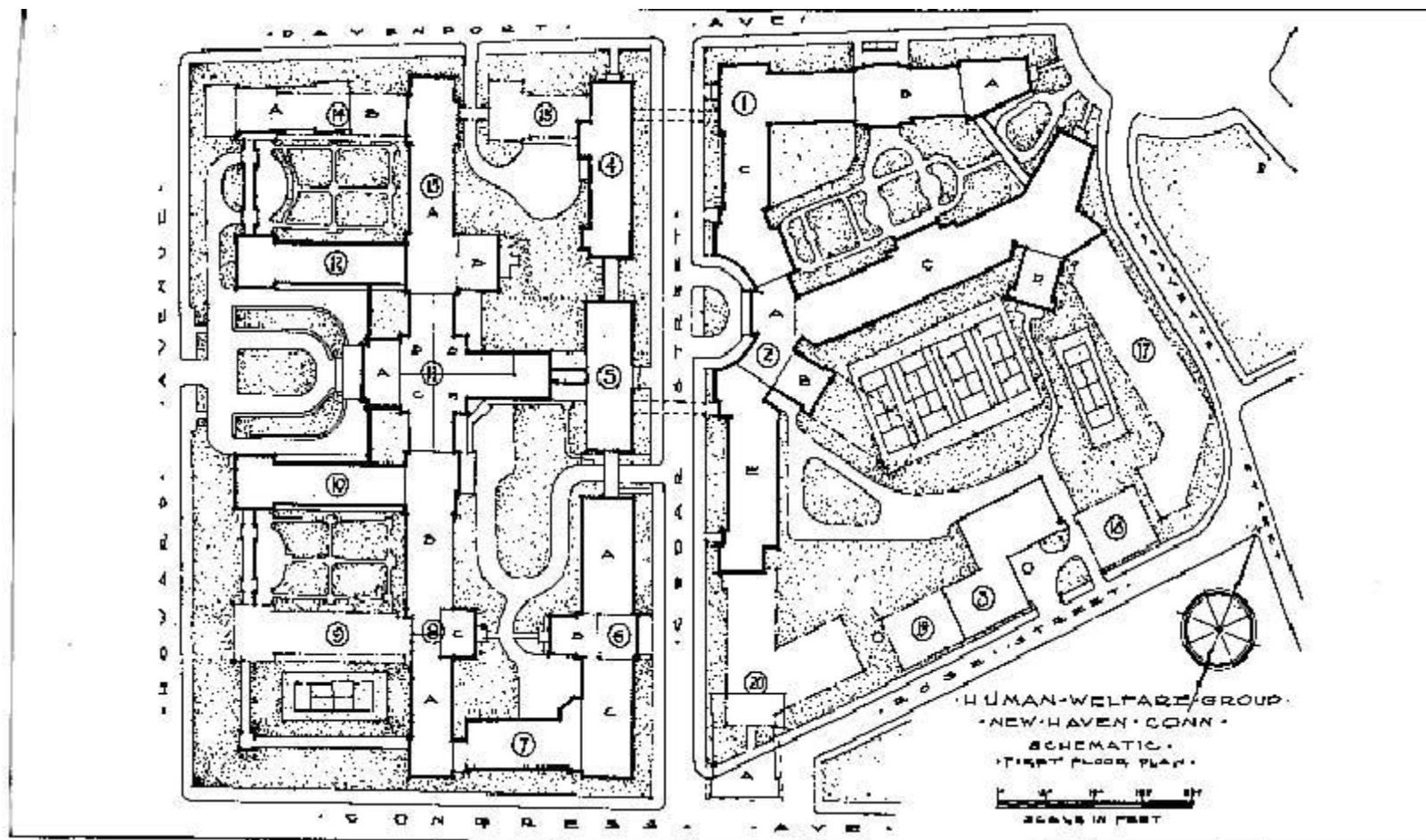


DIAGRAM III

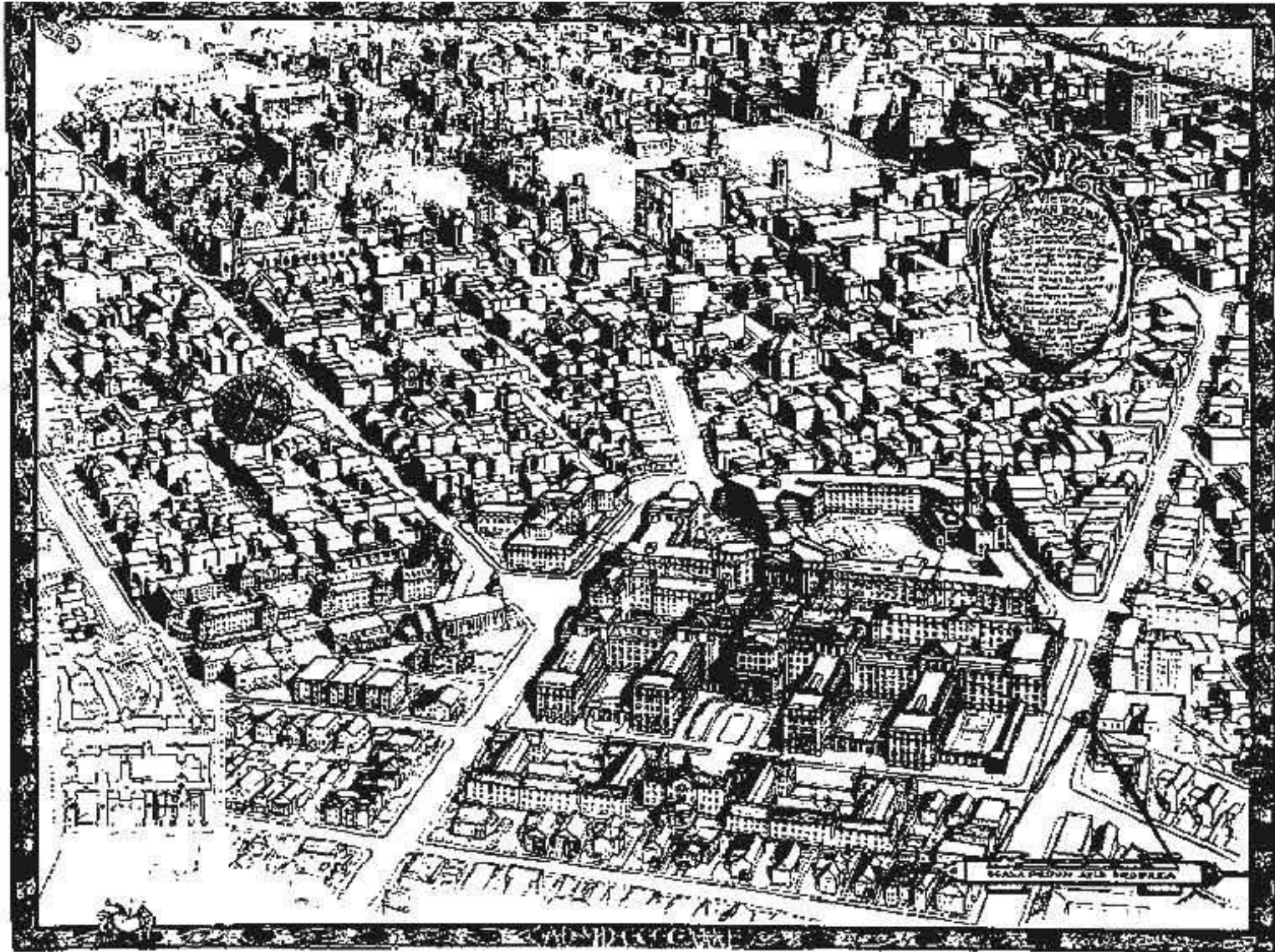




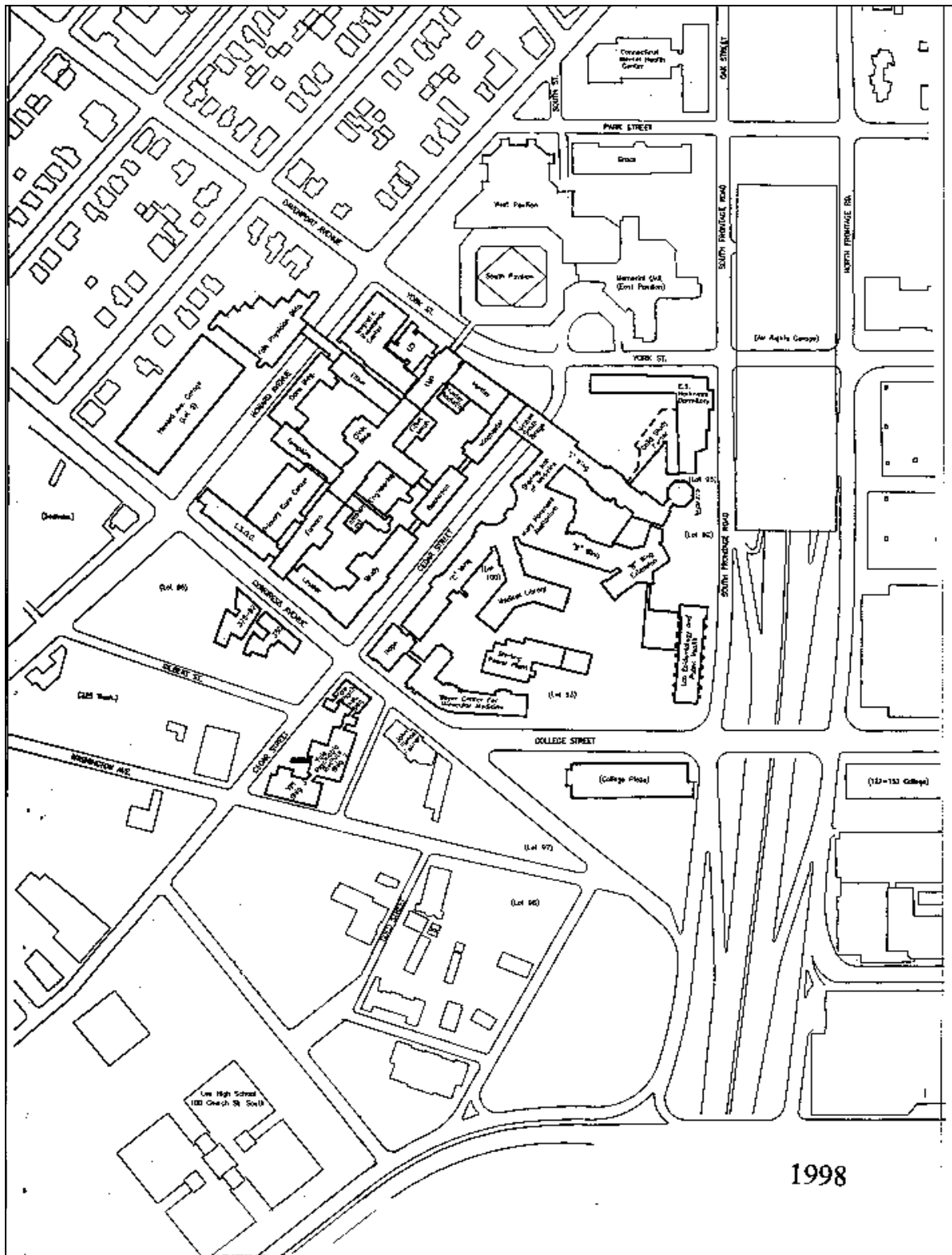


- HUMAN-WELFARE GROUP
NEW-HAVEN, CONN.
SCHEMATIC
FIRST FLOOR PLAN
SCALE IN FEET
- | | | |
|--|--|--|
| <p>1. Institute of Human Relations
A—Child Development Clinic B—Psychology
C—Psychiatric clinic—25 beds</p> <p>2. Scoville Hall of Medicine
A—Entrances and reception rooms H—Auditorium
C—Physiology D—Club room
E—Physiological chemistry</p> <p>3. Power House</p> <p>4. Private Patients Pavilion—15 beds, general</p> <p>5. Boardman Administration Building—Offices</p> <p>6. Brady Memorial Laboratory
A—School of Nursing B—Auditorium</p> | <p>C—Pathology offices and laboratories</p> <p>7. Leuder Hall
Pathology autopsy rooms, laboratories, classrooms</p> <p>8. Barnum Memorial Building
A—Obstetrics and gynecology, offices and examining rooms B—Surgery offices and examining rooms
C—Auditorium</p> <p>9. Future Ward Unit "A"—27 beds, surgery, male</p> <p>10. Sarah Wey Tompkins Memorial
27 beds, surgery, male</p> <p>11. Clinic and Service Building
A—Reception hall B—Nursing staff offices</p> | <p>C—Admitting offices D—Record rooms and stack
H—Administrative offices</p> <p>12. Raleigh Filkin Memorial—29 beds, medicine, male</p> <p>13. Laboratories of Medicine and Pediatrics
A—Medicine offices and laboratories
B—Amphitheater</p> <p>14. Future Isolation Ward Unit "D"
A—Erlating isolation pavilion
B—Admitting rooms; 15 beds, medicine</p> <p>15. Future Private Pavilion Addition—22 beds, general</p> <p>17, 18, 19, and 20, Future Buildings</p> <p>20. A—Existing New Haven Dispensary</p> |
|--|--|--|

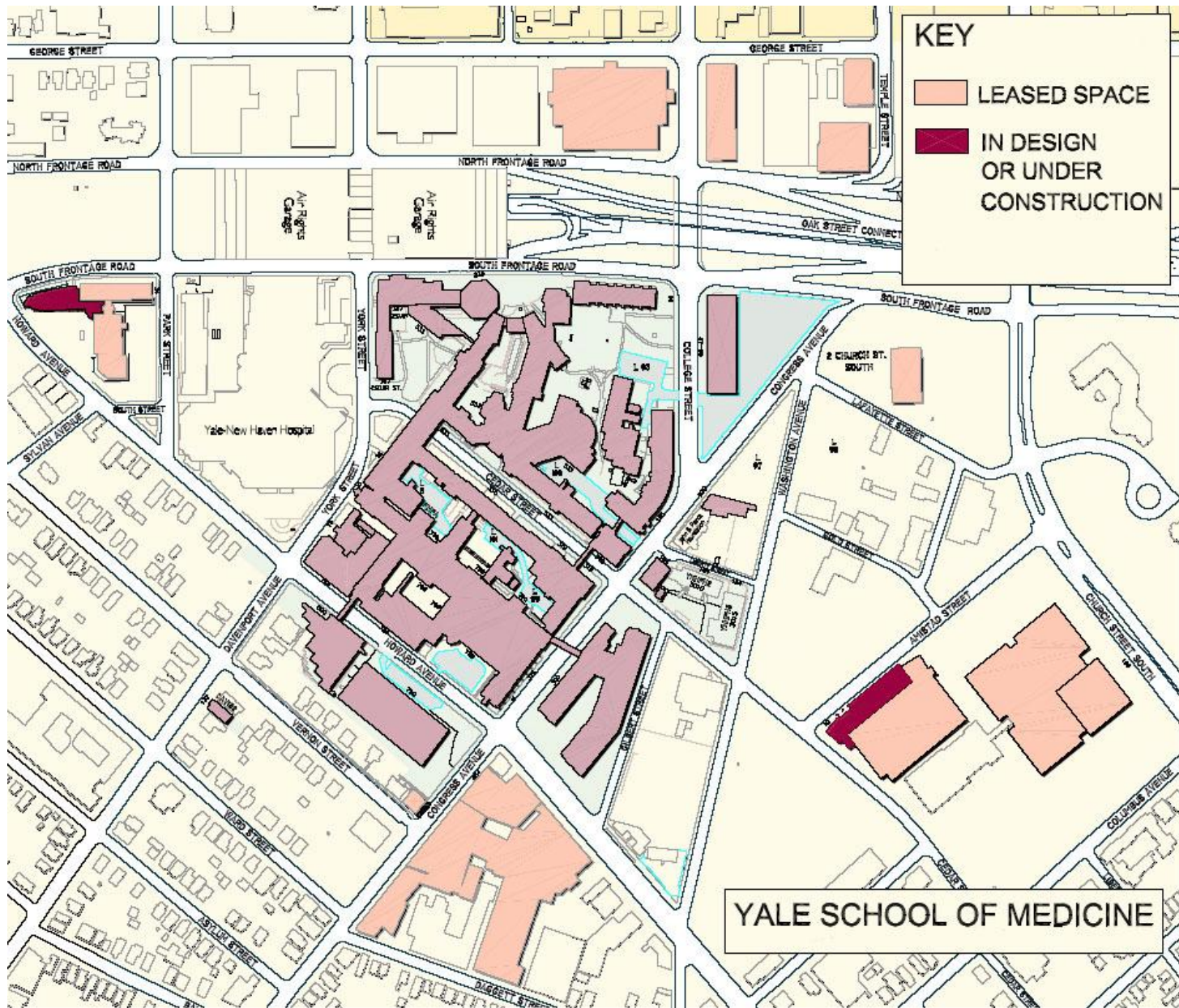
Fig. 3

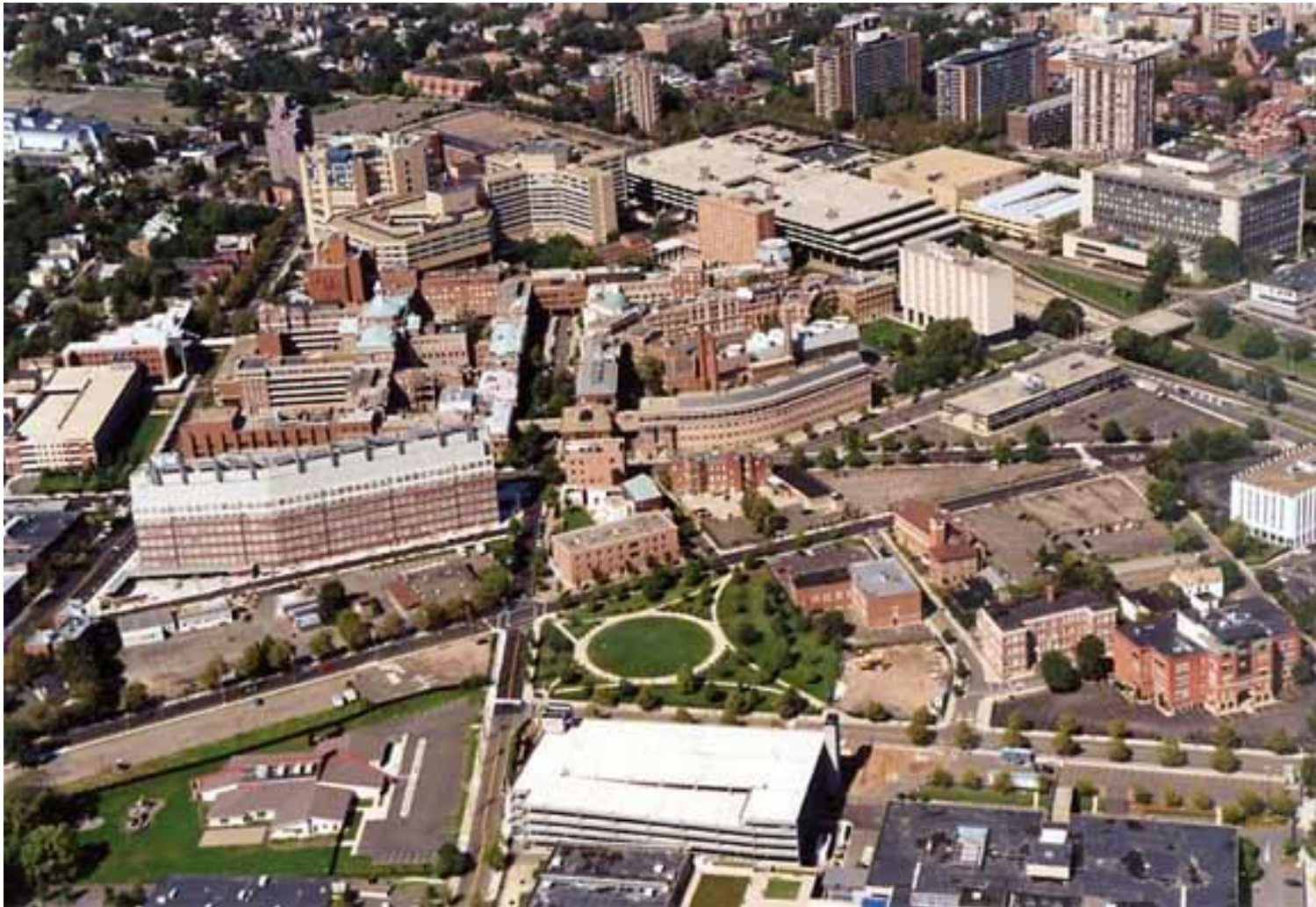


[Top of the Document](#)



1998





[Top of the Document](#)