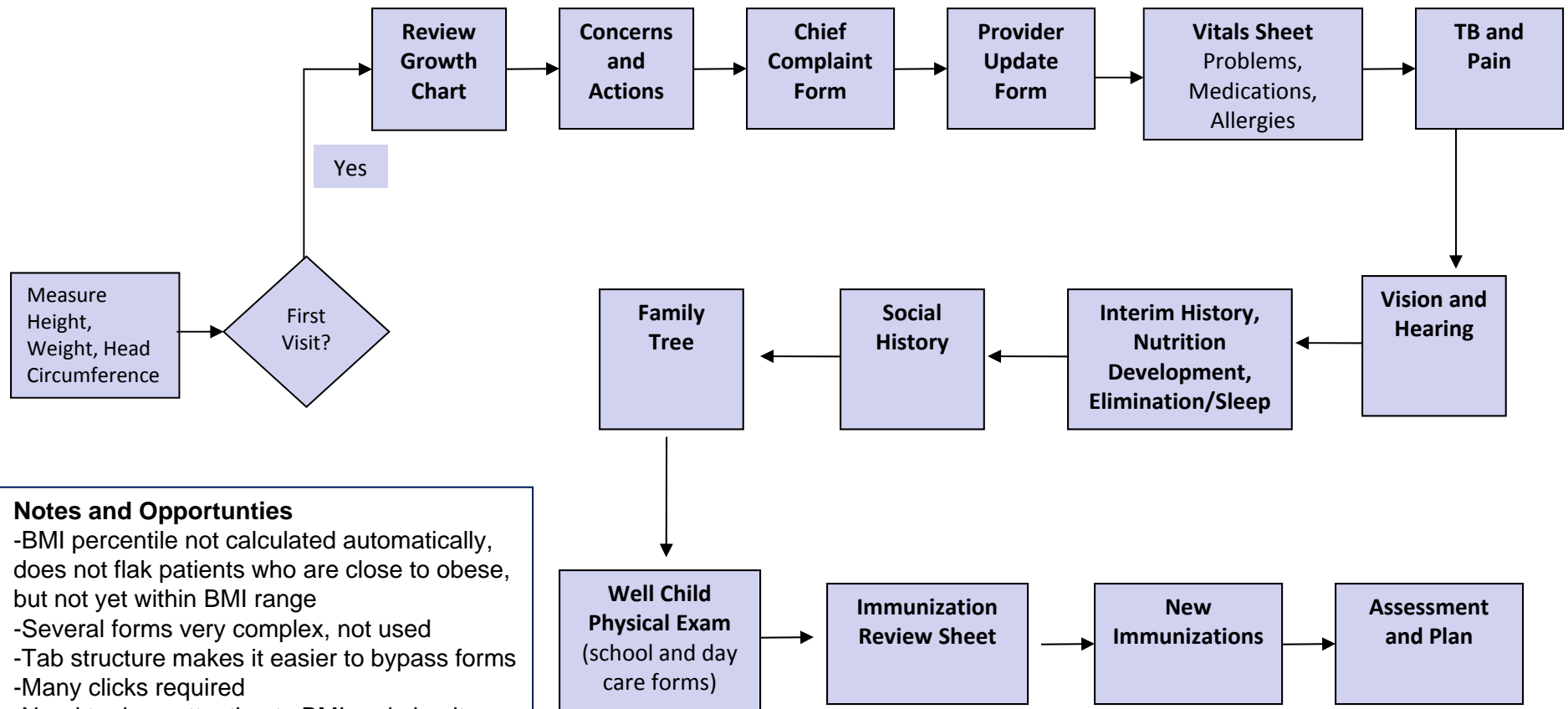


Yale – Pediatric Clinical Work Flow



Notes and Opportunities

- BMI percentile not calculated automatically, does not flak patients who are close to obese, but not yet within BMI range
- Several forms very complex, not used
- Tab structure makes it easier to bypass forms
- Many clicks required
- Need to draw attention to BMI and obesity as early as possible in the flow